



Broadhurst Avenue, Ilford, IG3 9DL

Offers In Excess Of £600,000





Offers In Excess Of £600,000

Broadhurst Avenue

Ilford, IG3 9DL

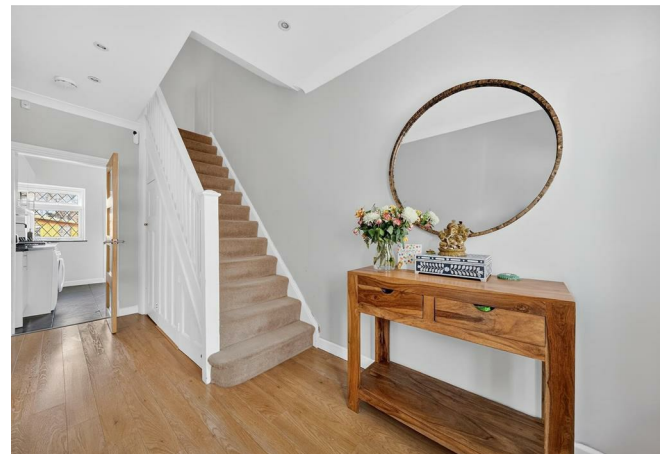
- EPC C
- Two reception rooms
- Shower room
- CHAIN FREE
- Three bedrooms
- Kitchen
- Approx 82' rear garden

Nestled in the charming area of Broadhurst Avenue, Ilford, this delightful house presents an excellent opportunity for families and professionals alike. With its inviting façade and well-maintained exterior, this property boasts a warm and welcoming atmosphere.

Inside, you will find two spacious reception rooms, perfect for entertaining guests or enjoying quiet family evenings. The layout is designed to maximise comfort and functionality, allowing for a seamless flow between spaces. The three well-proportioned bedrooms provide ample room for relaxation and rest, making it an ideal home for those seeking a peaceful retreat.

The property features a conveniently located bathroom, ensuring that daily routines are both efficient and comfortable. Additionally, the house offers parking for one vehicle, a valuable asset in this bustling area.

Broadhurst Avenue is well-connected, providing easy access to local amenities, schools, and transport links, making it a prime location for those who appreciate both convenience and community. This house is not just a place to live; it is a place to create lasting memories. Whether you are looking to settle down or invest, this property is certainly worth considering.



ENTRANCE

RECEPTION ONE 14'9" x 12'5" (4.50m x 3.80m)

RECEPTION TWO 15'5" x 11'1" (4.70m x 3.40m)

KITCHEN 9'6" x 7'2" (2.90m x 2.20m)

STAIRS TO FIRST FLOOR

BEDROOM ONE 14'9" x 11'9" (4.50m x 3.60m)

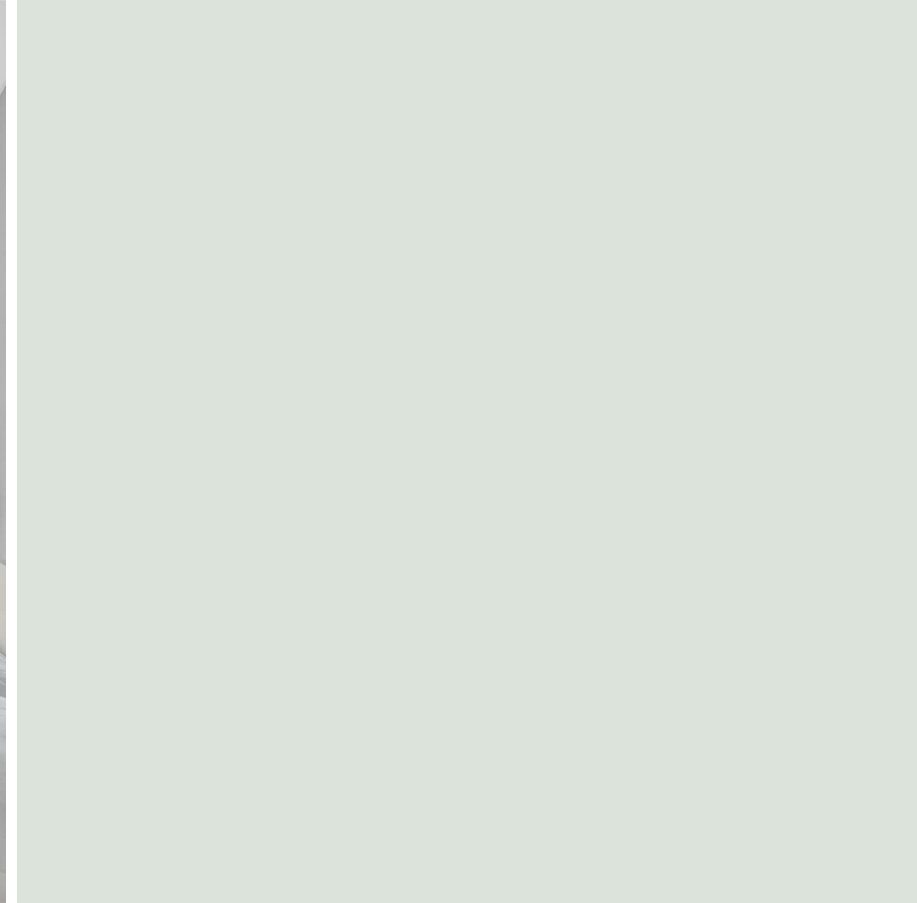
BEDROOM TWO 15'1" x 11'1" (4.60m x 3.40m)

BEDROOM THREE 8'10" x 7'2" (2.70m x 2.20m)

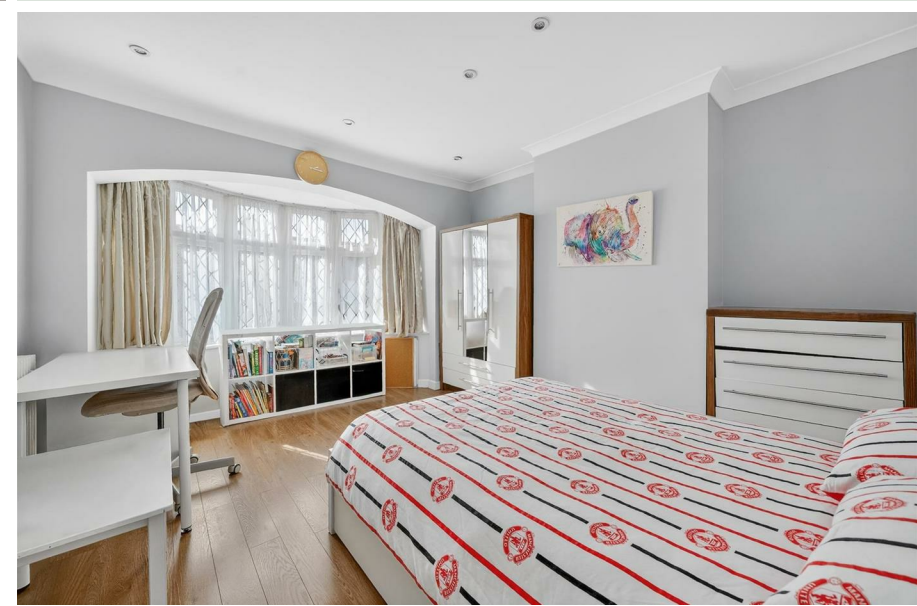
SHOWER ROOM 7'6" x 7'2" (2.30m x 2.20m)

EXTERIOR 82' (24.99m)

AGENTS NOTE



Directions





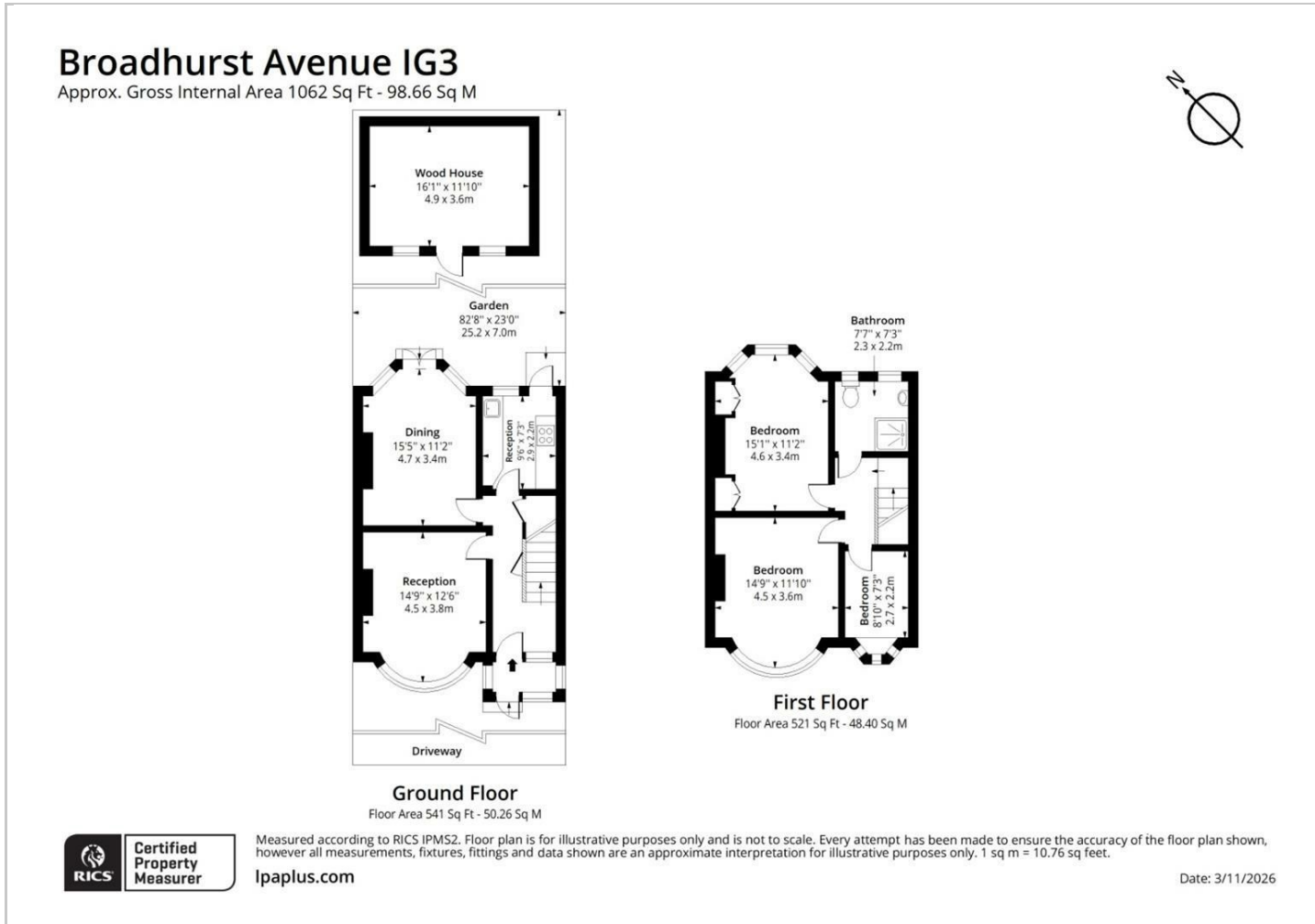
A wooden cabinet with a white front panel and three drawers. On top of the cabinet is a religious shrine with a golden Om symbol and a statue of a deity. There are also some small decorative items and a purple cup on the cabinet.

A wooden shelving unit with open shelves and drawers. The top shelf has a clear plastic storage bin and some boxes. The middle shelves have books and storage bins. The bottom shelves have more storage bins and a colorful bag.

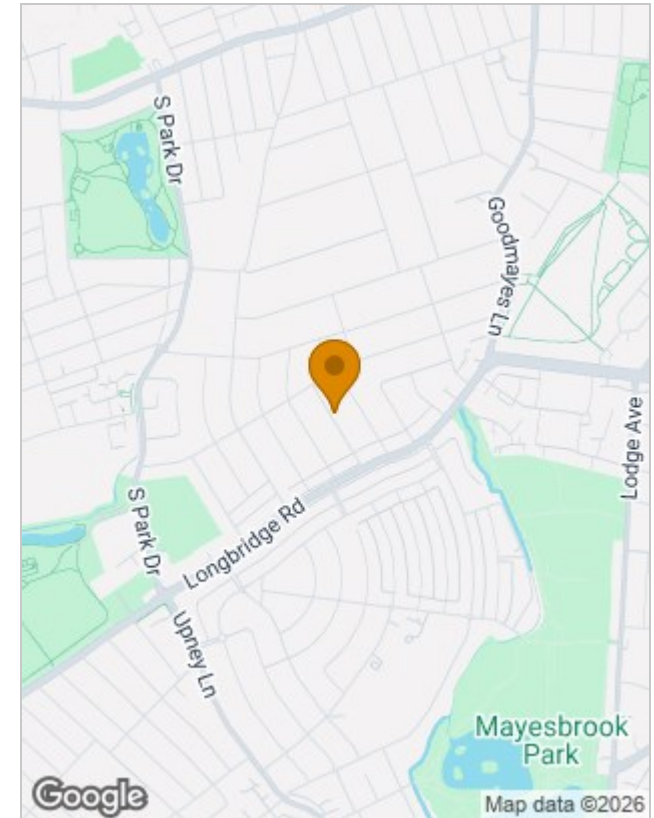
A white desk with a computer monitor and a stack of papers. The desk has two drawers on the left side. A window with patterned curtains is behind the desk.

A white electrical outlet with three sockets and a switch.

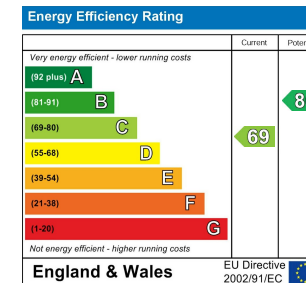
Floor Plans



Location Map



Energy Performance Graph



Viewing

Please contact our Seven Kings Sales Office on 020 8597 7372 if you wish to arrange a viewing appointment for this property or require further information.

The particulars are set out as a general outline only for the guidance of intended purchasers or lessees, and do not constitute, any part of a contract. Nothing in these particulars shall be deemed to be a statement that the property is in good structural condition or otherwise nor that any of the services, appliances, equipment or facilities are in good working order. Purchasers should satisfy themselves of this prior to purchasing.